



BLENDER UPGRADES

document #072605 Revision 00

GEMCOMATIC SANITARY RETROFITS

Sanitary valve replacement for GEMCOMATIC blenders

GEMCO, Middlesex N.J., has introduced a sanitary valve replacement for the standard GEMCO spherical valve that is an integral part of the blender. The new “Clamp-on” design can be completely removed without tools in minutes. This design leaves no cracks, crevices or tight corners where contamination can hide from a cleaning process.

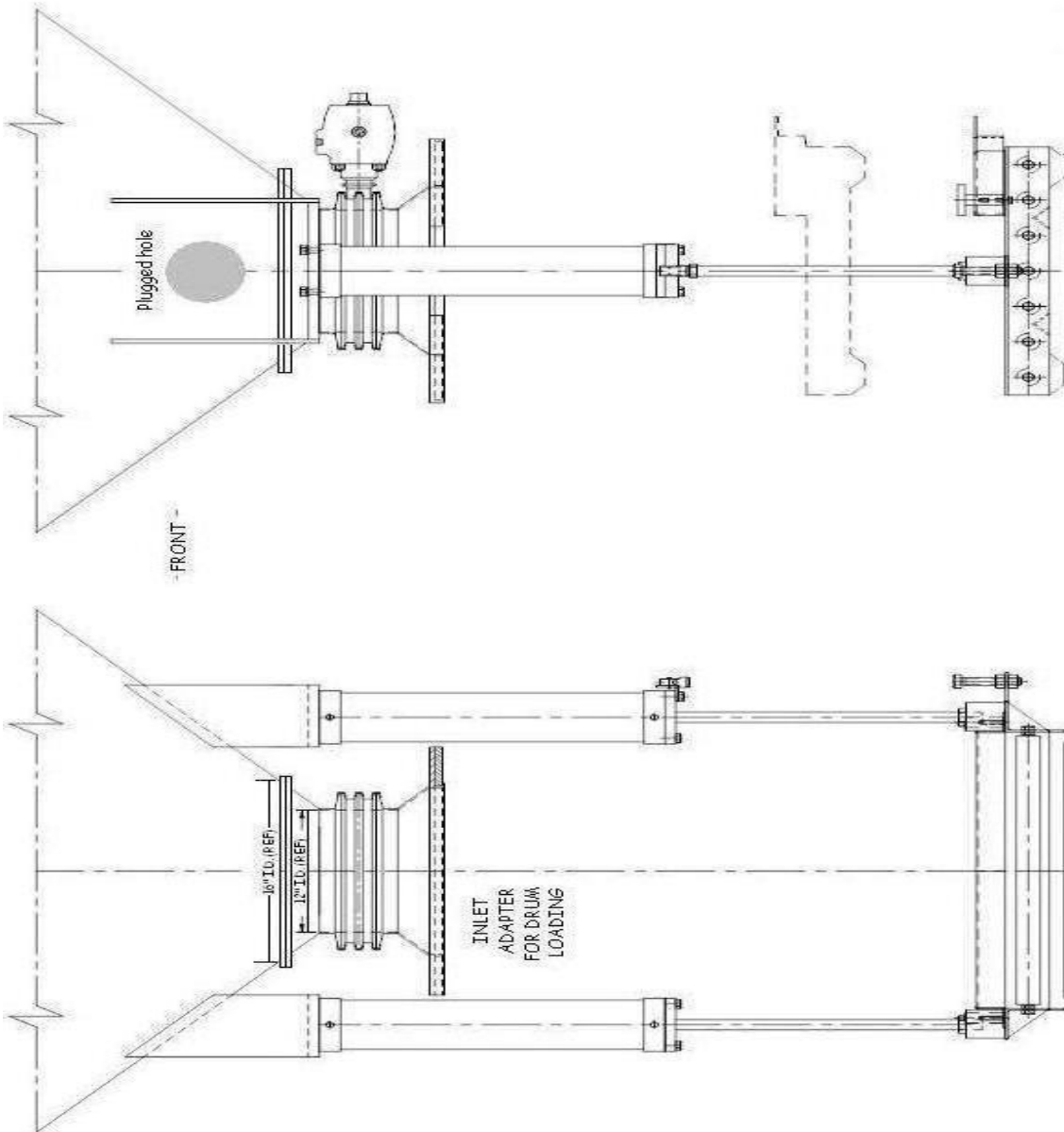
The original GEMCO spherical valve is a bolted design with machined, polished surfaces. While it is suitable for wash-in-place (WIP), it creates dead zones for clean-in-place (CIP) systems. Removing the parts is too labor intensive for an everyday cleaning operation. Nano or micron size particles can invade even machine fit connections where only thousands of an inch exist.

The CIP solution is to remove the GEMCO valve parts and close the shaft holes in the vessel. An adapter is added to the lower flange, which has a SANITARY quick clamp connection. A new sanitary quick-clamp valve is added with a removable drum seal flange.

To clean the blender with the new valve, the operator unsnaps the airline and releases the valve clamp. The valve can be washed and reinstalled without using tools.



GEMCOMATIC SANITARY RETROFITS



GEMCOMATIC SANITARY RETROFITS

SCOPE OF PROJECT:

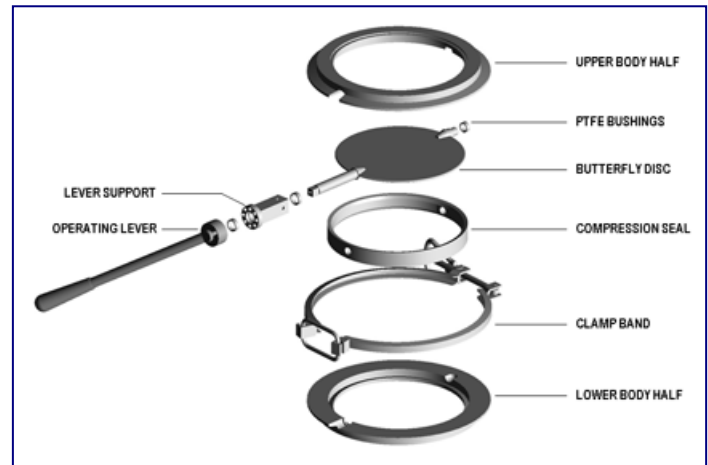
To remove 16" Gemcomatic valve assembly and install a new 12" sanitary tri-clamp type valve assembly. The new sanitary valve and adapters will require approximately 10-12" overall height increase, which will require the blender to be raised. The new assembly will be mounted to the existing vessel discharge flange. See detailed equipment modification and installation requirements.

Typical new parts

Qty	P/N	Description
1	232I0021	12" Sanitary, Butterfly Valve, Bolt-On Assembly *
2	Ref 730Z0117	Gemcomatic lift cylinders
2	26405-1654c-01	Vessel plugs (ss plate to be welded in the field)
2	Ref: 96094	9 inch support extensions

Estimated Lead-time: 12-14 weeks ARO

* INCLUDES, 12" SANITARY BUTTERFLY VALVE, 316L SST BODY & DISC with SILICONE SEAL (FDA), A/O with ANODIZED ALUM. DOUBLE-ACTING ACTUATOR, (1) CUSTOM DESIGN GEMCO MOUNTING ADAPTER IN 316L SST., (2) CLAMP BANDS, MIRROR POLISH INTERNAL & #4 POLISH EXTERNAL. THE CHARGING AND DISCHARGING ADAPTERS ARE INCLUDED.



Typical disassembly of sanitary valve parts.

GEMCOMATIC SANITARY RETROFITS



Removable loading flange with E-Z clean gasket

Equipment modification:

- ✘ Disassemble and remove 16" Gemco built in valve and component parts.
- ✘ Plug 16" built-in valve bushing holes in vessel
- ✘ Raise blender X inches and re-align blender

Installation:

- ✘ Bolt on new 16"/12" adapter flange
- ✘ Bolt on and align (2) new lift cylinders
- ✘ Re-assemble and align existing Gemcomatic lift tray
- ✘ Re-pipe airlines to Gemcomatic tray